

AT-AM2-2050-22XC

Active Multiplier x2, 20-50GHz Pout=+22dBm

Active X2, 20-50GHz Broadband, High Power



Description:

AT-AM2-2050-22XC is a broadband frequency doubler. The doubler has an input frequency of 10-25 GHz with a typical output +22dBm from 20-50GHz.

The integrated input and output buffers deliver high output power at a low drive level. The doubler also has a typical harmonic suppression. The input port is SMA female, and the output is 2.4mm Female. Other port configurations are available under different requirement.

More information, please visit www.atmicrowave.com

Feature

- ✓ Frequency: 20-50GHz
- ✓ Pout: +22dBm typical
- ✓ Input: 10-25GHz
- ✓ Low Harmonics

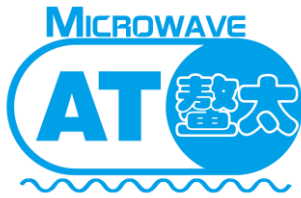
Application

- ✓ 28/39GHz 5G Communication
- ✓ Test Equipment
- ✓ ROF (RF Over Fiber)
- ✓ Radar System

Electronical Specifications:

Parameter	Min	Typical	Max
Input Frequency	10GHz		25GHz
Input Power	+0	+3dBm	+6
Multiplier Factor		X2	
Output Frequency	20GHz		50GHz
Output Power	+20	+22dBm	
1 st /3 rd Harmonic Suppression		-20dBc	
Drain Voltage		+5V	+8V
Current		500mA	800mA
Spec Temp		25C	





AT-AM2-2050-22XC

Active Multiplier x2, 20-50GHz Pout=+22dBm

Mechanical Information

Item	Description
Input Port	SMA Female
Output Port	2.4mm Female
Case Material	Copper
Finish	Gold Plated
Weight (Without Heatsink)	80g
Size:	See outline

Absolute Maximum Ratings Table

Parameter	Value
Drain Supply	+13V
RF Input Power	+15dBm
Operating Temperature	-40 to +85C
Storage Temperature	-55 to +125C

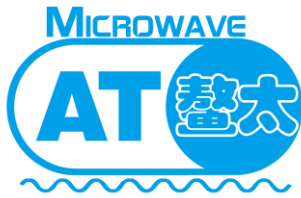
Notes:

- ✓ Datasheet may be changed according to update of MMIC, Raw materials , process, and so on.
- ✓ This data is only for reference, not for guaranteed specifications.
- ✓ Please contact AT Microwave team to make sure you have the most current data.
- ✓ Always pay attention to the temperature of the case, heatsink and fan are required if case temperature exceeds over 50C.

Part Number Selection Guide

Item	Description
PN	Stand Module with DC Power Supply
PN-LCBT	L ow Cost, C ompact B ench- T op, +220V Supply with AC/DC Adapter





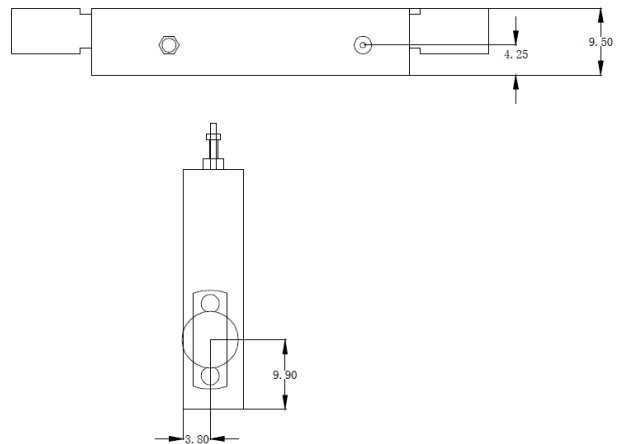
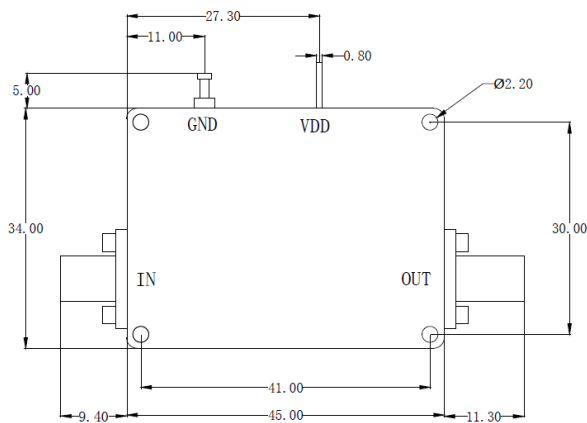
AT-AM2-2050-22XC

Active Multiplier x2, 20-50GHz Pout=+22dBm

Test Data (25C)

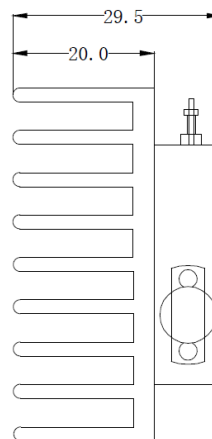
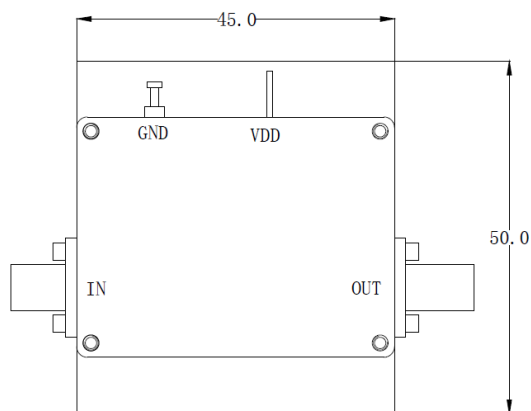
Please note that test curves will vary slightly from unit to unit.

Dimension: (Unit:mm)



	<26.5GHz	<40GHz	<50GHz	<67GHz
Connector	SMA	2.92mm	2.4mm	1.85mm
Lenth of a	9.4mm	9.5mm	10.8mm	11.3mm

Note: Female Default. Contact with us for other types.



Including a small heatsink without Fan if output Power higher than +20dBm.

Customers can removed it or use their own heatsink according to actual situation.

Heat Sink Required During Operation if case Temp higher than 50C

